

SCAFFOLDING

MAGAZINE 2022



LOOKING UP
BEST PRACTICE
IN SCAFFOLDING

Millcroft

CELEBRATING 50 YEARS

1972



2022

A great British company that continues
to innovate and grow

Call us on: 020 8305 1988

Millcroft Services Plc
Salutation House, 1 Salutation Road, Greenwich, London SE10 0AT
Email: sales@millcroft.co.uk

www.millcroft.co.uk

Contents

Switchboard

+44 (0)20 7490 5595

Sub-editor

Nicky Roger
Tel: 07704 336835
nicky@atompublishing.co.uk

Art editor

Heather Rugeley

Advertising manager

Howard Smith
07775 670 117
howard.s@atompublishing.co.uk

Credit control

Eva Rugeley

Managing director

Stephen Quirke

Published by Atom Media Partners,
3 Waterhouse Square,
138 Holborn, London EC1N 2SW
Tel: +44 (0)20 7490 5595

To contact the NASC

enquiries@nasc.org.uk
Tel: 020 7822 7400



Scaffolding is published by Atom Media Partners. The contents of this publication are copyright. Reproduction in part or in full is forbidden without permission of the editor. The opinions expressed by writers of signed articles (even with pseudonyms) in the magazine are those of their respective authors, and neither the NASC nor Atom Media Partners is responsible for these opinions or statements. Printed by Bishops Printers. All rights in the magazine, including copyright, content and design, are owned by the NASC and/or Atom Media Partners. ISSN 1360 3566



17

- 04 **NASC news**
The latest NASC developments
- 07 **Get connected**
Information membership
- 08 **NASC winners**
Showcasing the 2021 NASC Award Winners



23

- 17 **New NASC members**
Plus, how to find a member
- 20 **Appointing a contractor**
Advice on how to select a scaffolding contractor
- 23 **Guidance update**
Listing titles due to be updated



24

- 24 **Safety guidance focus**
Spotlight on two SGs
- 26 **Guidance index**
Technical and H&S guidance
- 30 **NASC Directory**
A regional guide to NASC Contractor Members

Welcome

Welcome to the latest issue of *Scaffolding*, published on behalf of the National Access & Scaffolding Confederation (NASC) by *Construction Management*.

This issue includes the latest news from the NASC, its outputs and activities and profiles of the seven NASC Awards 2021 winners.

It also includes practical information such as best practice on appointing a scaffolding contractor, the latest NASC guidance, tables of all technical and health & safety guidance and four pages showing NASC Contractor members by the five NASC membership regions.

We first published this magazine in 2018 as a way of reaching out to *Construction Management* readers, and we will continue to do so.

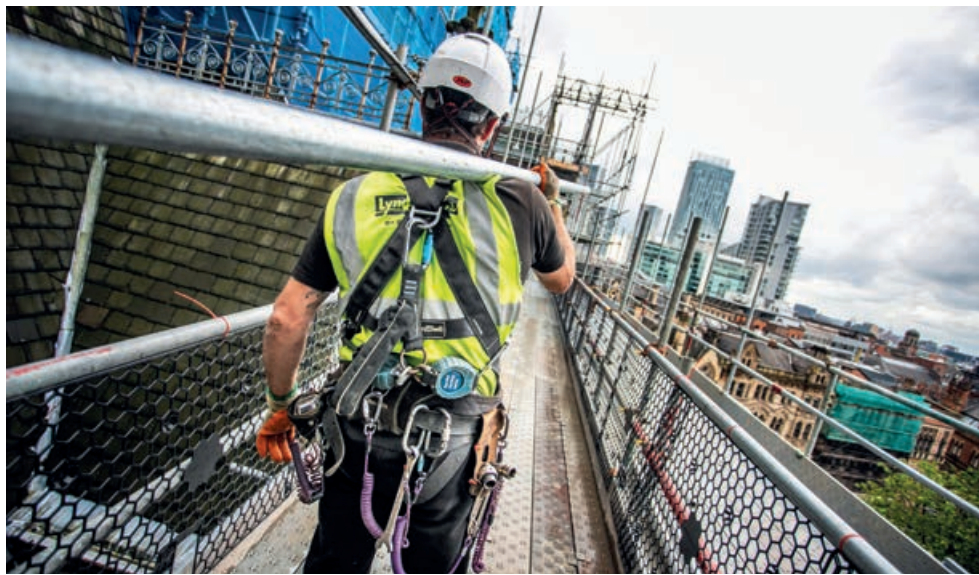
But through our recent changes to NASC Information membership, we hope many readers will reach out to us by applying for free membership.

We recognise that scaffolding and working at height in general requires a host of specialist personnel to be trained in their day-to-day duties and aware of relevant legislation to be able to work safely.

This starts with scaffolding operatives but extends far beyond that; including scaffolding inspectors, designers, estimators, supervisors and managers but also principal and specialist contractors, procurement managers, HSQE managers, health and safety consultants and so on.

Through this new, inclusive approach to membership, we hope to grow our network of members for the greater good – ensuring many more organisations and decision-

making individuals within them are informed and have direct access to expert scaffolding knowledge whenever they need it.



NASC drives up safety and standards in scaffolding

Regularly updated guidance and strict entry criteria for various membership categories are essential to standards

The NASC is the UK's trade body for access and scaffolding. It exists to set and maintain the standards for scaffolding, enabling those involved in the industry – either directly or indirectly – to operate safely and compliantly.

The NASC publishes guidance to help businesses do this. Its committees, comprising over 100 NASC member representatives, produce, publish and regularly review its library of titles covering technical, health & safety, contractual, product purchasing, asset protection, and environmental & sustainability topics.

All of these titles are available for purchase from the NASC's website. Many can be downloaded free of charge.



Members must meet a stringent set of criteria to determine whether the contractor is competent and compliant

Another way the NASC maintains standards is through its various membership categories, each of which has its own membership criteria. There are seven categories of membership:

- **Contractor membership**
Open to access and scaffolding companies. Members must meet a stringent set of criteria to determine whether the contractor is competent and compliant. These cover direct operative employment, training, products and equipment and more. Members are audited every year to ensure minimum standards are maintained.
- **Supplier membership**
Open to businesses that supply equipment to scaffolding

contractors. These are commonly referred to as hire, sales and manufacturing companies.

Members must complete the NASC Code of Practice (CoP) product audit.

● **Designer membership**

Open to all UK businesses which provide designs to the access and scaffolding industry. To qualify for membership, designers or principal designers employed by the business must provide evidence of appropriate levels of qualifications and experience.

● **Services & Ancillary Products membership**

Open to businesses that provide services and ancillary products.

● **Information membership**

New! Turn to page 7 for full details.

● **International Information membership**

Open to companies based outside of the UK who work within the access and scaffolding industry but do not carry out contract scaffolding or supply main scaffolding products.

● **CISRS Training Provider membership**

Open to CISRS accredited training providers.

The NASC has recently taken a number of steps to increase member-to-member engagement across the network of membership categories. Turn to page 6 to find out more.

Working Groups working well

Committee sub-groups on sustainability and fleet issues have made a significant start



▲ A working group on fleet and transport has two aims

The NASC's Current Affairs

Committee has recently created two topic-led sub-groups to help meet the brief in specific areas. These working groups have been tasked with providing guidance, support and direction on sustainability and environmental issues and fleet and transport issues.

Both groups have hit the ground running. The Sustainability & Environmental Working Group has initially been focused on providing useful and accessible guidance to members about how they can reduce their carbon footprint and work towards net zero.

It has recently produced an easy-to-use guide to net zero carbon,

including a glossary and FAQ, quick wins, potential longer-term opportunities, grants and incentives, a draft policy statement and useful links. This guide is available from the NASC website.

The Fleet & Transport Working Group has two objectives: provide members with information and guidance relating to fleet matters, such as licences, driver hours, loading and unloading and vehicle inspections, and represent the members' interests in a lobbying capacity.

The Group has also been tasked with maximising the NASC and its members' return from the Confederation's Gold Affiliate Membership of Logistics UK, which is now beginning to bear fruit.

A webinar was held last month to give members a better understanding of what they can gain through their free membership of Logistics UK and a flow of useful resources is now being sent to the Group by Logistics UK each month.

Find Out More

Request a free NASC Information Pack by emailing us at enquiries@nasc.org.uk. The Pack contains free digital versions of core NASC Health & Safety guidance as well as the latest copies of NASC publications, including the NASC Yearbook and NASC Safety Report, as well as NASC and CISRS site posters.



Stand-out safety statistics released

This month the NASC will publish its 2022 Safety Report. This edition will contain accident statistics and analysis relating to the 2021 calendar year.

The 2021 Safety Report saw NASC Contractor members – employing a combined workforce of 16,084

operatives – record 81 incidents, the second lowest on record.

The NASC is the only scaffolding member organisation to publish its reported accident statistics. It does so to demonstrate the exceptionally high safety standards of its NASC Contractor

members but also as a means of better understanding the causes of incidents, crucial in the pursuit of putting plans in place to help prevent them from happening in the future.

Read the NASC's annual Safety Report at www.nasc.org.uk



D&R SCAFFOLD

D&R Group plc

& CRADLES

ESTABLISHED SINCE 1965



Construction Line Gold Member

- Quality Assured ● CITB Trained Operatives ● Safety Officer ●
- Technical Support ● Cradle Division ● Cost-effective Appraisals ●
- Rapid Response Service ● 24Hr Emergency Service ●



E: info@drscuff.co.uk W: www.drscuff.co.uk



Main contractors, specialist contractors, clients and trade bodies are now being encouraged to get connected to the NASC through free NASC Information membership.

As the name implies, membership provides businesses with a raft of information. This comes through a discount on all NASC guidance, receipt of monthly NASC e-bulletins containing the latest updates on NASC outputs and activities that are relevant to them, and free hard copies of NASC magazines.

Membership also opens up a two-way form of communication. Members are invited to contact the NASC for expert scaffolding support.

The NASC's in-house technical and health & safety experts are on hand to provide guidance and assistance on a broad range of complex matters.

Membership is free. Members can create as many individual user accounts as they wish, ensuring NASC information reaches the right people directly.

NASC Managing Director Robin James said: "The new NASC Information membership category provides members

Get connected

Free information membership is available to all parts of the construction industry

The new NASC Information membership category provides members with the latest scaffolding industry information and up-to-date guidance on a range of practical issues

Robin James,
Managing director NASC



with the latest scaffolding industry information and up-to-date guidance on a range of practical issues.

"It also gives them access to the NASC's team of experts, able to provide specialist support on technical and health & safety matters as well as contractual, product purchasing and general compliance issues.

"This all adds up to peace of mind, something that is invaluable for any business involved with working at height or temporary works."

Benefits:

- Discount on all NASC guidance including TG20:21
- Access to scaffolding support: establish a direct connection with the UK's trade body for access and scaffolding, including its technical, health & safety and contractual experts. Got a question? Pick up the phone or send us an email and we'll help you.
- Gain a better understanding of NASC outputs and activities, including guidance, toolbox talks and site safety posters in development through the Monthly Information Membership NASC e-bulletin
- Free copies of NASC magazines – NASC Yearbook, Safety Report, Scaffolding Matters and Scaffolding Magazine ●

For more information on NASC Information membership and to complete an application form, visit the NASC website – www.nasc.org.uk/memberships

Success stories

The 2021 NASC Awards drew a record 72 entries across five categories. On the following pages we shine a spotlight on the winners



Project of the Year (Turnover £5m+)

Sponsor: TRAD Hire & Sales Ltd
Winner: Denholm Industrial Services Ltd
Project: Forth Rail Bridge, Northern Approach Viaducts

The scaffolding is a suspended access slung from the bridge steelwork with access via scaffold staircases and goods and personnel hoists. The system chosen for the design was Plettac Metrix and the reason for this was to reduce the amount of loose materials needed to be used at height above the village, the productivity benefits

over tube and fittings, plus the greater control over design features using systemised components.

The design was created using a combination of historic drawings from the 1800s and site surveys to determine the geometry of the structure. The system scaffold components lend themselves to greater control over the finished scaffolding, but also required very careful planning to ensure that any clashes with the permanent structure could be mitigated and allowed for in the design.

Each scaffold span was a 50m long x 10m wide x 10m high suspended birdcage with shrink-wrap

▲ It's like painting the Forth bridge: Denholm's project

More details on the Awards and the seven award winners can be found on the NASC website. Go to www.nasc.org.uk and search for 'NASC awards'.

Once the pattern for construction became familiar the scaffold team quickly became very efficient at creating this structure



encapsulation to the outer faces. The scaffolding was required to allow the Denholm industrial Services painting team access to all the steelwork sections on the bridge spans and to collect and contain all arisings from these re-preservation works.

Challenge accepted

The system scaffold and bridge interface was a challenge, as some of the historic structural data was a little less accurate than expected. The initial construction phases meant close contact between the scaffold team, project manager and technical manager. Once the pattern for construction became familiar the scaffold team quickly became very efficient at creating this structure.

The logistics of keeping the areas below the works safe meant adopting safe methods of work to tether tools and scaffold equipment and erecting safety netting in critical areas. The development of the safety netting system to protect the village from the works developed during trials to allow for a localised protection system to be drawn out and withdrawn at each shift.

This meant that protection was provided when works were being carried out but the netting system was not exposed to environmental conditions that would be detrimental to it and the bridge structure. ►



GILRAY PLANT

Timber - the only truly sustainable building material. Buy Gilray scaffold boards for the most eco-friendly option



A growing European Spruce absorbs carbon dioxide



When felled, three other trees are planted in its place



Carbon remains locked away in the manufactured scaffold board & is only released at the end of its life cycle

01322 442006

gilray.co.uk



BSI Kitemarked Scaffold Boards made to BS 2482



**Project of the Year
(Turnover up to £5m)**

**Sponsor: Layher Ltd
Winner: Crossway
Scaffolding (Elland) Ltd
Project: Saltburn Viaduct,
North Yorkshire**

Eleven no piers and abutments had fully boarded scaffold around them for access and to give support to the 1.28m deep dessa beams spanning the arches. The 10 no arches were spanned 15 metres to provide a fully boarded deck below each arch. Scaffolding was then punched from the beams along the two long sides of the viaduct.

Poor ground conditions prevailed to some of the arches so crane mats were used up to one metre square to spread the loads from the scaffolding standards as sleepers or sole pads would not support the leg loads which were up to 80 kn in some of the leg clusters. A total of 110 crane mats were used.

Some piers rose from the ravine and sheer rock faces which ran through the centre of the viaduct and this problem was solved by using gallows brackets made from RMD soldiers bolted to and through the brickwork with the scaffolds springing from these. In total, some 800 tons of equipment was

▲ 800 tons of equipment was used by Layher for Saltburn Viaduct

Constant interaction with the designer and client was required to overcome issues with the struture, the environment and logistical problems with the isolated location of the viaduct



used in this scaffolding package including the purchase 2265 metres or 1.40 miles of 1.28m deep beams.

Challenges

There were many challenges to address on this project:

- The whole scheme had to be completed in 12 months during the pandemic . Breaks had to be staggered and teams were separated both travelling to site, working on site and staying in overnight accommodation with very few issues.
- The use of the gallows brackets including additional brackets saved the client time and expense in costly groundworks which would have to have been remediated on completion of the project.

Considerable trials were undertaken to decide the best method of fixing to the 150-year old brickwork. Layher re-designed the fixings by incorporating steel reinforcement bars which were held into place with a special quick curing resin. The ties then had to be tested using a special pull tester to determine the quality of the fixings. Some had to be re-sited and retested due to sub-standard brickwork.

As a result of this intensive testing regime supplementary brackets and wire cables were used giving additional support.

During the erection process the client decided to have the whole

structure built at once rather than a section then moved. This entailed the additional expense in purchasing additional materials and dessa beams amounting to hundreds of thousands of pounds.

The client required the work to be completed to the original programme which presented particular resource challenges including labour and materials.

Excessive manual handling was overcome by using rail vehicles to crane materials onto a large loading platform built by us at ground level. Also, a goods/passenger hoist was used for the transportation of operatives and materials. Separate hoists were used in erecting the large beams spanning the arches.

Constant interaction throughout the project with the designer and client was required to overcome unforeseen issues with the existing structure and environment and logistical problems with the isolated location of the viaduct. Two separate compounds were set up in fields to receive the loads of materials required.



Innovation of the Year

Sponsor: PERI Ltd

Winner: Layher Ltd

Innovation: Layher Allround AGS Façade System

The aim of the Layher Allround AGS Façade System was to simplify and enhance facade scaffold installation, with the focus on the key benefits of safety, speed and versatility.

The AGS system comprises of 2m standard[s], with integrated innovative quick-release loading levers, in which the specifically developed guardrails slot into and are retained against falling out by means of a special milled slot.

Importantly, these levers are coloured red so as to enable a rapid visual check of an entire structure to be made from ground level. The 2m standard is also equipped with a rosette at 1m high, so as when combined with standard Layher Allround it facilitates the fitment of transoms at deck level and in doing so integrates seamlessly with the rest of the standard Allround scaffolding.

The Layher Allround AGS system uses lightweight materials, which not only aid the manual handling process but also, because of its dimensions, help to optimise transportation and storage – once installed, extensions can be readily added, regardless of the existing structure's layout.

A key benefit is the interchangeability of minimal specific components, whilst maintaining customers pre-existing investments in existing product.

The Layher Allround AGS enhances the system's independence and enables



▲ Red levers enable a rapid visual check

the user to react flexibly to requirements that may arise on site – for example, all other Layher Allround components, hop-up brackets, stairs, loading bays and much more can become part of an AGS installation, integrating seamlessly.

Continuous equipment innovation and improvements are vital to Layher – much of which has been inspired by customer feedback, also a vital contributing factor towards the success of any new product development – the strategic partnership is important as the firm designs/manufactures only and does not erect, so buildability feedback is needed to then improve initial prototypes. ►

“ The Layher Allround AGS enhances the system's independence and enables the user to react flexibly to requirements that may arise on site

Apprentice of the Year

Sponsor: CISRS
Winner: Adam McLennan, City Access Scaffolding Ltd

Adam, 22, prior to joining City Access, worked for another scaffolding company for 18 months, but there was never any talk of progression or an apprenticeship which made him feel very undervalued.

From the age of 12 to 16, Adam was in care and attended a residential school due to continuous disruption and truancy. "Speaking to Adam, you would never associate him with being disruptive or disrespectful in any way, in fact, I can honestly say he is the polar opposite," says Kirsty Allan, performance director at CAS. "Completing his scaffolding apprenticeship during the pandemic has been both challenging and disappointing – college had to cancel scheduled courses. Adam was eagerly awaiting to attend his Part 1 training at college back in June, which was unfortunately postponed.

City Access says Adam has been committed to his practical learning, which is recognised by his chargehands and is often reported back to his supervisors and directors. Prior to attending his proposed Part 1 at college, Adam took the initiative to call operations director, Jonathan Allan, to request he be moved to a different project for a month to ensure he had good tube and fitting experience in preparation for training.

"We have never had this kind of initiative from an apprentice before so we were delighted to oblige," says Allan. "Adam won 'employee of the month' in June last year for his continued great attitude to work. He is always so respectful, warm and engaging with both clients and his peers at work. As a small token, we offer the employee of the month a £25 voucher. Adam selected a Cafe Nero voucher to share with his squad. He is most definitely a team player."



▲ Above: Ian Hines a champion for mental health issues

NASC President's Award

Sponsor: Chris Sedgeman Scaffolding Ltd
Winner: Ian Hines, Brand Energy & Infrastructure Services UK Ltd T/A Lyndon SGB

Ian Hines, regional SHEQ manager, is the leader of the firm's mental health team, one of the internal MHFA England instructors. The company has described him as "the biggest advocate of raising awareness, educating people and removing the stigma and discrimination around mental health that you could ever wish to meet".

Ian has delivered MHFA training to over 150 Lyndon SGB employees and another 50 to clients and other contractors on the sites where we work, along with numerous mental health awareness training sessions.

Beyond the day job, Ian maintains his passion and drive for this subject, he has set up a not-for-profit organisation to deliver mental health first aid, youth mental health and applied suicide intervention skills training (ASIST) to communities, youth centres etc in and around the Birmingham area.

Ian also volunteers for the Samaritans and gives up his own time often at very unsociable hours to help others, indeed while we were all watching England in the final of the Euros Ian was volunteering.

Ian has also set up the 'No Holds Barred Support Group' where he holds regular Zoom calls, no cameras no names just a safe place to talk

Ian regularly takes part in charity events again to raise awareness and raise money for mental health charities he has previously ran a half marathon, completed Tough Mudder, taken part in White Collar Boxing and this year is training for a marathon. ▶

“We offer the employee of the month a £25 voucher, Adam selected a Cafe Nero voucher to share with his squad. He is a team player”

◀ Left: Adam McLennan, Apprentice of the Year

TONE[®]

SCAFFOLDING
SERVICES

ALWAYS THINKING ||| ALWAYS SAFE



innovative
handrail
guard safety
system

Call now: **020 3781 7771**

TONE Scaffolding Services HQ Green Lane Sawmills, Green Lane, Outwood, Redhill, Surrey RH1 5QP

Email: solutions@tonescaffolding.co.uk www.tonescaffolding.co.uk





Health and Safety (67+ Operatives)

Sponsor: HAKI Ltd
Winner: Benchmark Scaffolding Ltd

The introduction of the Benchmark App has been very beneficial to the company and operatives: no more carrying booklets and pens and it reduces the carbon footprint. It sends prompts for carrying out safety checks and offers 110 toolbox talks. The mobile App replaces the arduous paper trail that site operatives disliked so much; it has not only been endorsed by the site teams, but it has also encouraged them to complete far more near misses and safety observations than previous years, which is a bonus for accident reporting and analysis.

Each entry from the App is entered into one portal, from there documents are filed into their own sections and can be easily obtained or retained for statutory periods.

The company also made great H&S progress through carbon footprinting, internal training and operative health surveillance. More details on this can be found on the NASC website.

▲ Above: A mobile App has transformed H&S reporting
▶ Below right: The City Access team picking up a previous NASC H&S Award

“Through JNF we have secured three members of staff connection with a trained counsellor for a minimum of eight weeks”

Health and Safety (1-66 Operatives)

Sponsor: Forgeco Ltd
Winner: City Access Scaffolding Ltd

City Access has collaborated with The Joshua Nolan Foundation – a charity that specifically works to combat suicide by providing funding towards counselling for those who are at risk or impacted by suicide. Although the construction industry has moved forward with health and safety, such as protocols for preventing physical injuries and death, there are still huge improvements to be made in protecting the mental health of workers. Since suicide is the biggest killer of men between 20 and 49, City Access has taken preventative action to avoid such tragedies within the workplace. “At CAS, we offer all staff the opportunity to reach out to our performance director if they require support. Kirsty, performance director, connected with the JNF as a volunteer. Through this

collaboration we have secured three members of staff connection with a trained counsellor for a minimum of eight weeks. This programme develops strategies with the individual to cope with suicidal/self-harm thoughts.”

Further to its dedication to mental health within the workforce, CAS currently offers all staff the opportunity to attend The Mindful Enterprise. This is an eight-week mindful course delivered by The Mindful Enterprises skilled practitioners.

Also, it offers saving opportunities with Capital Credit Union. Generally, the scaffolders will tend to invest in the Christmas Saver Account. Deducting a small amount, which they can afford each week to save up money for when they need it the most.

The company has also upgraded its near miss reporting system and developed a check list app all chargehands to run through before the start of work each day. ●





For all your scaffolding requirements throughout the North West Area

A member of



NATIONAL ACCESS & SCAFFOLDING CONFEDERATION

Freephone: 0800 6528545

Fax: 01282 411174

**Pomfret Street, Burnley,
Lancashire, BB11 4AF**

Email: cwrscaffolds@btconnect.com

Web: www.cwrscaffolds.co.uk

Providing you with the right support

- Member of the N.A.S.C.**
- ISO9001 Accredited**
- Fully comply to safety standards**
- Dedicated management & office staff**
- Permanent & fully trained workforce**
- £10m liability cover**
- Excellent reputation within the industry**



Providing you with the right support

**Souldern Gate
Banbury Road, Souldern
Bicester, Oxon
OX27 7HT**

Tel: 01869 345999

Fax: 01869 345155

admin@kscaffoldingltd.co.uk

www.kscaffoldingltd.co.uk



OPTIMA
Scaffold Designs LLP

Experienced Scaffold Engineers
National Coverage
Efficient Design Solutions
Prompt Service

BRISTOL OFFICE
68 Macrae Road
Eden Office Park
Pill
Bristol
BS20 0DD
Tel: 01275 393944

LONDON OFFICE
The Old Chapel
69 Primrose Hill
Kings Langley
Hertfordshire
WD4 8HX
Tel: 01923 269146



DARTFORD

Tel: 01322 271554

Mob: 07860 478180

www.redscaffoldinglimited.com



Member of



National Access & Scaffolding Confederation

ESHER SCAFFOLDING GROUP LTD

Over the last 6 years, our team at Esher Scaffolding has progressively grown and 2021 proved to be a pivotal year for Esher Scaffolding. Firstly, our Transport Manager Anthony Cacace led the way in achieving FORS Silver accreditation and continues to maintain an immaculate fleet of vehicles and driver compliance.

Becoming members of the NASC was a goal for the company in 2021 and it was successfully achieved by the team at the end of the year.

In the midst of the company's achievements we moved to a larger premises in December. Considering how much the company has grown, the opportunity to move really came at a crucial time.

And finally, to complete what was already a successful year, Esher Scaffolding was awarded a place on the Thames Water Framework Agreement.



Gascoigne Road SPS, Barking
2020



Knight & Bessborough Reservoir, Walton 2021



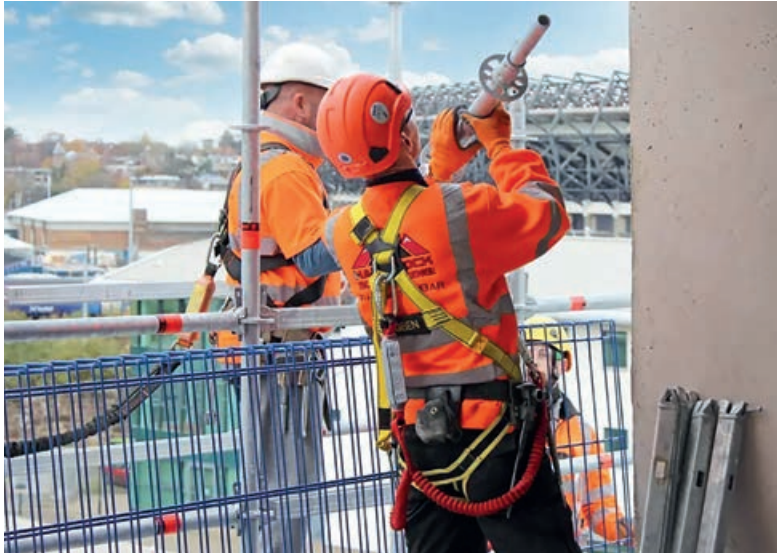
Managing Director, Kevin Withers said 'Becoming members of the NASC and being awarded a place on the Thames Water

Framework Agreement are by far my proudest moments and biggest achievements of my career within the scaffolding industry. An incredible amount of hard work has gone in to reaching this standard of operating and I have a great team on board'.



Pictured left to right:

Leah Withers - Financial Director
Matthew O'Reilly - H&S Assistant
Anthony Cacace - Transport Manager
Max Hilligenn - Operations Manager
Ella Inwood - Office Manager
Kevin Withers - Managing Director



▲ Even more scaffolding contractors have joined the NASC in the past year

Joining the network

New contractors joining NASC has swelled membership

Since the publication of last year's magazine, 10 scaffolding contractors have successfully attained NASC Contractor membership. These

companies are listed below. In total, there are now 239 NASC Contractor members operating across the UK. These companies are listed by region

Castle Scaffold (Northern) Ltd North Shields, NE29 8RD

www.castlescaffold.co.uk
Covering a full range of scaffolding services, including offshore, onshore, commercial and industrial settings. We provide the turnkey scaffolding solution across the whole of the North East

Esher Scaffolding Group Ltd Esher, KT10 8BJ

www.esherscaffolding.com
Esher Scaffolding has taken great pride in delivering professional scaffolding services covering London & the South East. We provide scaffolding services to commercial sectors & specialise in providing access solutions to a utilities sector.

Hard Rock Scaffolding Ltd Inverkeithing, KY11 1HZ

www.hardrockscaffolding.co.uk
Hard Rock Scaffolding Ltd is an established scaffolding contractor with over 65 years of industry experience between the team. Covering the whole of the UK, we are fully trained, accredited and authorised to work on all types of large and small scaffolding jobs and have worked on projects within industries such as marine, construction, nuclear, residential, corporate and commercial.

Infiniti Scaffolding Ltd Scarborough, YO11 3BT

www.infinitiscaffolding.co.uk
Infiniti Scaffolding provides a comprehensive range of scaffolding services and equipment for all commercial

and industrial sectors. Based in Yorkshire, we work directly across the UK and the north of England with commercial, industrial and residential clients, local authorities, residents, landlords, housing associations and construction companies.

MTL Scaffolding Ltd Gateshead, NE8 3AE

www.mtlscaffolding.com
Providing safe, reliable and trusted scaffolding solutions for over 20 years for commercial and domestic construction projects.

P & G Scaffolding Ltd Aylesham, CT3 3EP

www.pandgsc scaffolding.co.uk
We undertake contracts throughout London and southern England and have a broad range of experience to draw upon.

P James Construction Ltd Newcastle upon Tyne, NE12 9UP

www.pjames.co.uk/scaffolding
With over 20 years' experience our in-house scaffolding team are all CISRS certified and trained to exceptionally high standards.

PDL Scaffolding Ltd Widnes, WA8 0RH

www.pdlsc scaffolding.co.uk
We have more than 30 years' experience delivering specialist scaffolding services across the North-West. Whether you're looking for industrial or commercial scaffolding in Merseyside, Cheshire or anywhere in North-West England, we are here for you.

PJC Scaffolding Solutions Ltd Oldham, OL9 9EY

www.pjcscaffolding.co.uk
Harbours an extensive knowledge in all scaffolding, we cater for a wide range of clients. Whether you are a large commercial company, in need of industrial scaffolding or a private individual, we cater for all.

SWC Scaffolds Ltd Bristol, BS16 3JX

www.swcscaffolds.co.uk
SWC Scaffolds provide professional scaffolding services to a range of clients from the commercial, Industrial & domestic scaffolding sectors.

How to find a member

- 1 To find an NASC member in your area, go to the NASC website and click the 'Find a Member' box at the top of the page.
- 2 In the pop up box that then appears, simply enter a postcode to see members located near that location. You can then refine your search by membership type – Contractor or Supplier – and by whether the members are based near the given postcode or serve that area.
- 3 For each member that is displayed, you can then click on the arrows near their company names to visit their individual member profiles.
- 4 You can contact members directly via the 'send a message' feature on each member profile.
- 5 Alternatively, you can search the full NASC Member Directory. To do this, click the 'Find a Member' box at the top of the home page and then select 'search full directory', found underneath the white pop up box.
- 6 This will take you to a page where you will find all NASC members listed A-Z. You can refine by all NASC member types and also search for members by company name.

Integrated solutions to keep you close to the action throughout your structural repair project

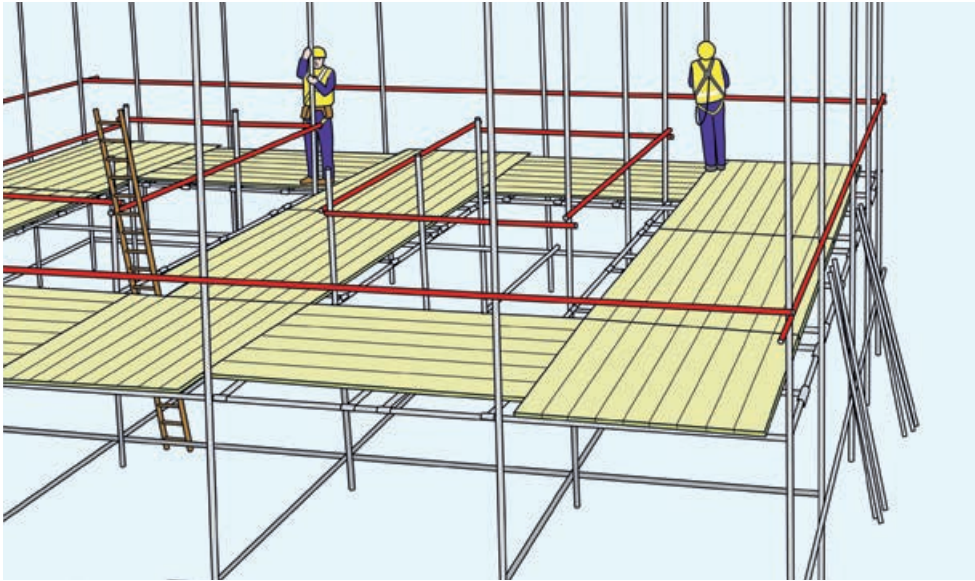
From birdcage scaffolds to suspended scaffolding to loading bays, the **PERI UP** toolkit transforms into the solution you need at each stage of your project.



To find out more about PERI UP Scaffolding
speak to an expert on: **01788 288072**

For more information, scan the QR code or visit: link.peri.ltd.uk/scaffolding-hub





Specifying the criteria for a scaffolding contract at tender/pre-contract stage(s) can be as onerous and uncertain a task as trying to manage the operations of an appointed scaffolding contractor
 Lynn Way, NASC President

Guidance on Appointing a Scaffolding Contractor – to be used in conjunction with the management guide. This document provides simple and accessible assistance on a range of principal contractor responsibilities, including:

- Monitoring of scaffolding operations during erection/modification/dismantle
- Scaffolding design, calculations and risk assessment/method statement (RAMS)
- Scaffolding inspections and handover

NASC President Lynn Way said: “For many main contractors/clients specifying the criteria for a scaffolding contract at tender/pre-contract stage(s) can be as onerous and uncertain a task as trying to manage the operations of an appointed scaffolding contractor.

“The information contained within SG39:21 and the associated management guide will be of great assistance to those procuring, appointing and managing scaffolding contracts. It should help ensure that the correct and up to date scaffolding standards are incorporated into relevant contract documentation and further requiring that appointed scaffolding contractors adopt recognised scaffolding industry good practice upon their site(s).” ●

Choose wisely

Selecting a scaffolding contractor should not be undertaken lightly. Here the NASC offers help with the process

Under The Construction Design and Management Regulations (CDM), principal contractors and contractors have an important role in managing health and safety risks during the construction phase.

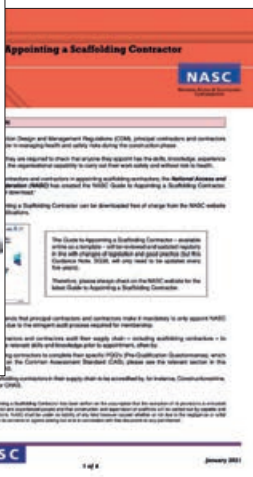
Among their duties, they are required to check that anyone they appoint has the skills, knowledge, experience and, where relevant, the organisational capability to carry out their work safely and without risk to health.

To assist principal contractors and contractors in appointing scaffolding contractors, the NASC has created the NASC Guide to Appointing a Scaffolding Contractor, a comprehensive management guide which is available for free download via the NASC website.

This 20-page document includes information on competence, minimum scaffolding requirements, regulations, codes of practice and best practice.

The NASC has also published a go-to reference guide – SG39:21

◀ NASC offers a comprehensive guide to selecting a scaffolding contractor





TRADITIONAL
OR SYSTEM
SCAFFOLDING ?

AFIXGROUP is the one-stop scaffold manufacturing and service expert. We deliver professional scaffolding systems and smart service solutions for construction, industry, infrastructure and event projects.



AFIX GROUP UK Ltd
Esgors Farm, High Road,
Thornwood, CM16 6LY | UK
+44 1992 946 355
office.uk@afixgroup.com
www.afixgroup.com



UK's **BIGGEST** SCAFFOLD DISTRIBUTOR

- EN74 & BS 1139 SCAFFOLD FITTINGS
- KITEMARKED STEEL LADDERS
- DROP FORGED & PRESSED STEEL
- TG20:13 READYFIX TRANSOMS
- REVOLUTIONARY **KLAANZ** FITTING
- ADJUSTABLE STEEL PROPS

+ MANY MORE INDUSTRY RECOGNISED PRODUCTS

CALL 0121 568 7831 OR EMAIL
SALES@FORGECO.CO.UK

VISIT OUR WEBSITE
WWW.FORGECO.CO.UK

SCAN TO VIEW OUR
PRODUCT BROCHURE



YOUR OWN COMPANY APP THAT DOES WHAT YOU WANT IT TO DO!



EVEN NATURE UNDERSTANDS SAFETY.

IPhorms is an employee smart hub, that gives you Time-sheet management and paperless solutions. It allows you to digitise all of your important documents, allowing you to save lives, save money and remove liability.

It's, simple and easy to use, it's completely bespoke allowing the transformation of all your paper forms into one place. Every form records the Date, time, and GPS Location, our most commonly used forms are: Timesheet Management, Daily safety confirmation off every member of staff, vehicle inspection, harness inspection, scaffold inspections, site inspections, anchor pull test, verbal variations, near miss / accident report, and many more.

VIEW VIDEO



01625464238
nigel@iphorms.com

iPhorms
Paperless Solution

www.iphorms.com



Guidance review

The NASC routinely updates its guidance. Here is what's new and due to be updated in 2022

The NASC standing committees' efforts to ensure guidance is comprehensive, up-to-date and fit-for-purpose continues apace. The following titles are currently under review, being developed at the time of publication or have been published.

A list of NASC technical and H&S guidance can be found on pages 26-27. To download a digital list of all NASC titles, visit the NASC website and search 'guidance index'. ▶

SG1:14	Control of Substances Hazardous to Health in Scaffolding (COSHH)
SG2:17	Asbestos Licences and Ancillary Work Involving the Scaffolding Contractor
SG4:15	Preventing Falls in Scaffolding Operations
SG6:15	Management of manual handling in the scaffolding industry
SG11:15	Noise
SG16:14	Management of Fall Protection Equipment
SG18:14	Welfare Facilities for the Scaffolding Contractor
SG26:14	Scaffolding & Hoists
SG42:22	Working over or near water (new)
SG43:22	Lone Working in Scaffolding (published)
SG44:22	Five Key Occupational Health Risks in Scaffolding (new)
SG45:22	Management of Temporary Works to BS 5975 (new)
SG	Toolbox Talk Suite
TG9:17	Guide to the Design and Construction of Temporary Roofs and Buildings
TG13:16	Non-Standard Boarded Platforms
TG17:15	Identification of EN74 Scaffold Fittings
TG26:22	Galvanic Corrosion of Aluminium Tubes and Prefabricated Beams (published)
CG18:09	Daywork
CG24:22	Guide to Staff Handbook (new)
CG25:22	Common Contract Terminology (new)
PG5:18	Purchasing Guidelines for Aluminium Beams



equipment that reflects current industry good practice. The Health and Safety Committee working party tasked with carrying out the review considered accident learning, legal cases, good industry practices and new technology for fall prevention and protection.

This includes using the information from the current NASC 2020 Safety Report, which documents and analyses accident and injury statistics for our full contracting members.

To ensure the guidance remains current, obsolete products and methods of working that are no longer in common use have been removed. New sections have been introduced or further guidance provided to protect scaffolders and support employers in establishing safe systems of work.

Examples of new or enhanced guidance in the forthcoming edition of SG4 for preventing or protecting against falls include:

- Work on or near fragile surfaces
- Safety for the construction of traditional temporary roofs
- Sheeting and cladding operations
- Working with system scaffold decking

Guidance on the requirements of BS 5975
BS 5975 'Code of practice for temporary works procedures and the permissible stress design of falsework' was last revised in 2019. Despite its title, this document includes information regarding procedural controls for the management of temporary works, which not only apply to falsework, but also to all types of scaffolding.
 Many scaffolding contractors are unaware of these requirements or the potential relevance to their operations.

To ensure the guidance remains current, obsolete products and methods of working have been removed. New sections have been introduced to support employers in establishing safe systems of work

Whilst the guidance contained within BS 5975 is not a legal requirement, many Health and Safety Executive (HSE) inspectors, when visiting sites, may expect to see evidence that adequate and appropriate controls are in place for the management of temporary works and often cite this document as the expected norm to be used within the industry.

The NASC has therefore produced a brief and concise guide to assist scaffolding contractors and others involved with the delivery and management of temporary works. SG45:22 Management of Temporary Works to BS 5975 will shortly be available and contains details of the basic requirements included within BS 5975, how these are currently interpreted and administered throughout the industry and essential guidance for scaffolding contractors.

Further and more detailed guidance regarding the management of temporary works can be found in the guidance document recently produced by the Temporary Works Forum – 'Effective management of



scaffolding to BS 5975:2019' (the TWf Guide). A copy of the TWf Guide can be downloaded, free of charge, from the TWf website. ●

Scope of SG4 Update
The review of SG4:15 Preventing Falls in Scaffolding Operations began in January 2020, however the progress of the review has been impacted by the global coronavirus pandemic.

The NASC is pleased to report that the final draft of the updated management guide is nearing completion and due to be released this Spring. It is intended that the guide will be supported once again by a pocket book user guide (SG4:You).

The focus of the review has been to ensure that the guidance features methods of work and

▲ Updated SG4:15 offers guidance on safe systems of work



BROGAN GROUP

DEFINING ACCESS SOLUTIONS
HOISTS - MAST CLIMBERS - SCAFFOLDING

✉ Enquiries@brogangroup.com

☎ 0333 358 0007

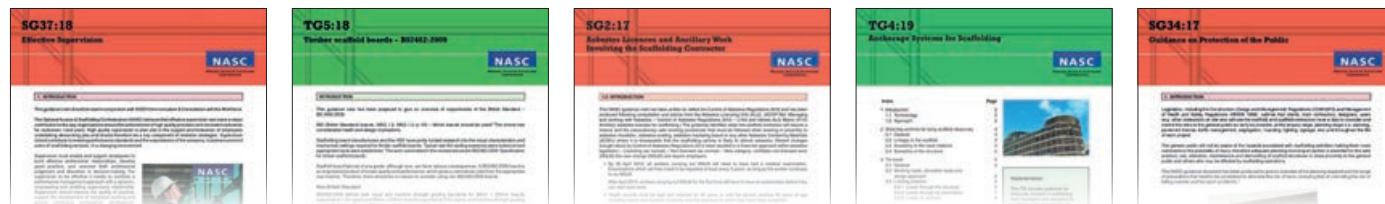
🌐 brogangroup.com

NASC guidance index

Your guide to the full suite of NASC Technical and H&S guidance

Safety Guidance: (UR) = Under Review

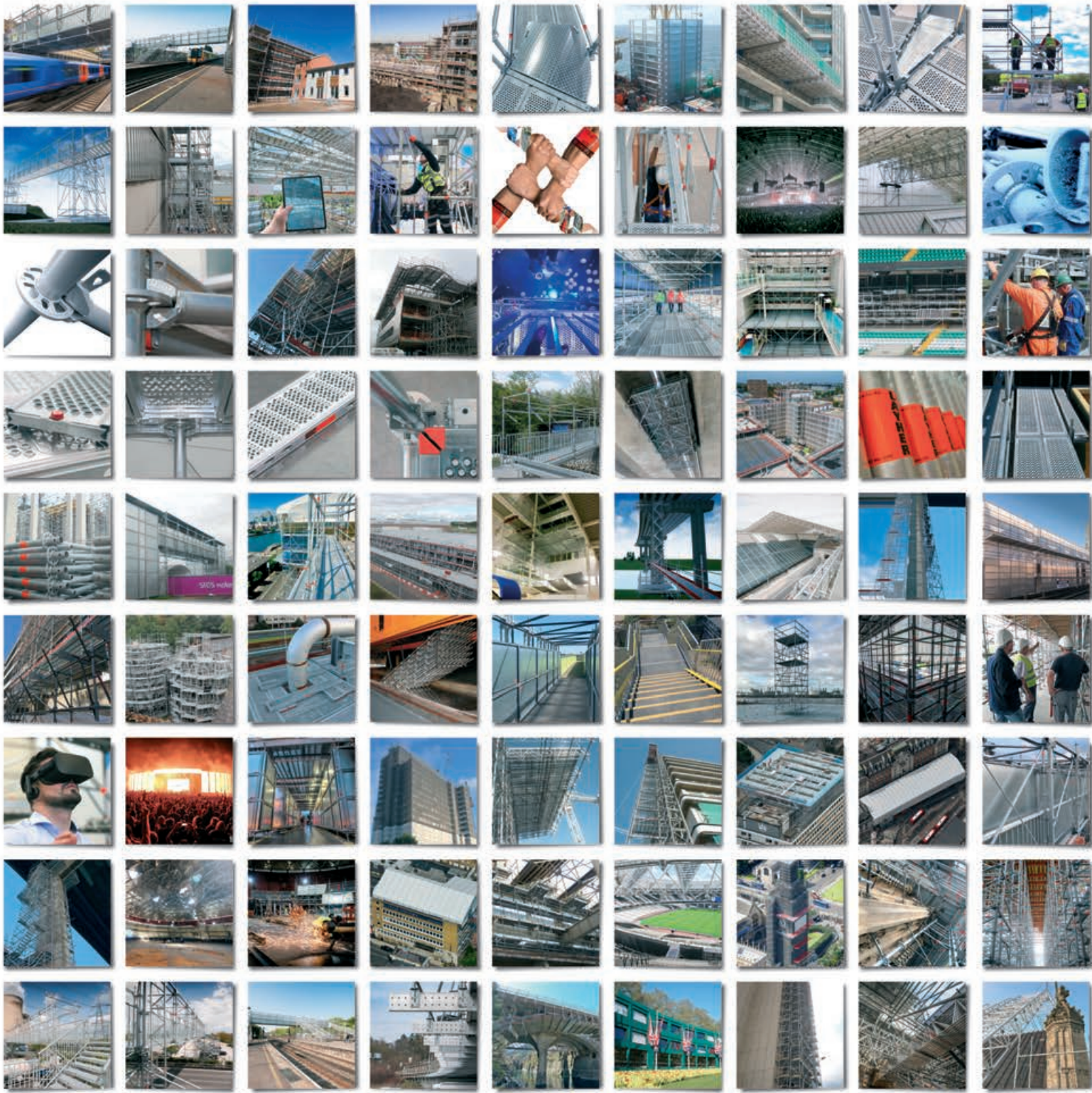
Guidance No.	Publication Date	Title
SG1	14	Control of Substance Hazardous to Health in Scaffolding (COSHH) (UR)
SG2	17	Asbestos Licences and Ancillary Work Involving the Scaffolding Contractor (UR)
SG3	21	Asbestos Awareness for the Scaffolding Contractor
SG4	15	Preventing Falls in Scaffolding Operations (UR)
SG5	18	Overhead Power Sources and Earthing of Scaffold Structures
SG6	22	Management of manual handling in the scaffolding industry
SG7	19	Risk Assessments & Method Statements
SG8	17	Reporting of Accidents Procedure and RIDDOR
SG9	21	Use, Inspection and Maintenance of Lifting Equipment [...] in the Scaffolding Industry
SG10	19	Use of Brickguards
SG11	15	Noise (UR)
SG12	N/A	Document not in system
SG13	17	Health Surveillance in Scaffolding
SG14	N/A	Document not in system – for information about Safety Nets refer to FASET
SG15	17	Drugs and Alcohol at Work
SG16	14	Management of Fall Protection Equipment (UR)
SG17	N/A	Document incorporated in SG16
SG18	14	Welfare Facilities for the Scaffolding Contractor (UR)
SG19	17	A Guide to Formulating a Rescue Plan
SG20	19	Consultation & Participation with the Workforce
SG21	17	Entry into Confined Spaces
SG22	17	Induction Training
SG23	N/A	Document not in system
SG24	N/A	Document now incorporated in SG7
SG25	20	Access and Egress from Scaffolds
SG26	14	Scaffolding & Hoists (UR)
SG27	09	Temporary Edge Protection on Open Steelwork – temporarily withdrawn (UR)
SG28	17	Safe System of Work for Scaffolding Associated with Timber Frame Building Construction
SG29	17	Internal Edge Protection on Scaffold Platforms
SG30	17	Management of Road Haulage for the Scaffolding Contractor
SG31	20	Management of Slips and Trips
SG32	17	Provision of Extended and Telescopic Transoms and Board Brackets
SG33	14	Guide to the Construction of Scaffold Loading Bays and Loadbearing Platforms (UR)
SG34	17	Guidance on Protection of the Public
SG35	21	Handover of Scaffold Structures and First Scaffold Inspection
SG36	18	Unauthorised Modifications to Scaffolds
SG37	18	Effective Supervision



Guidance No.	Publication Date	Title
SG38	19	Guidance on Mental Health & Wellbeing
SG39	21	Guidance on Appointing a Scaffolding Contractor
SG40	20	Scaffolding Yard Operations
SG41	20	Long Standing Scaffolding Structures
SG42	TBC	Working over or near water
SG43	22	Lone Working in the Scaffolding Industry
SG44	TBC	Five Key Occupational Health Risks in Scaffolding

Technical Guidance: (UR) = Under Review

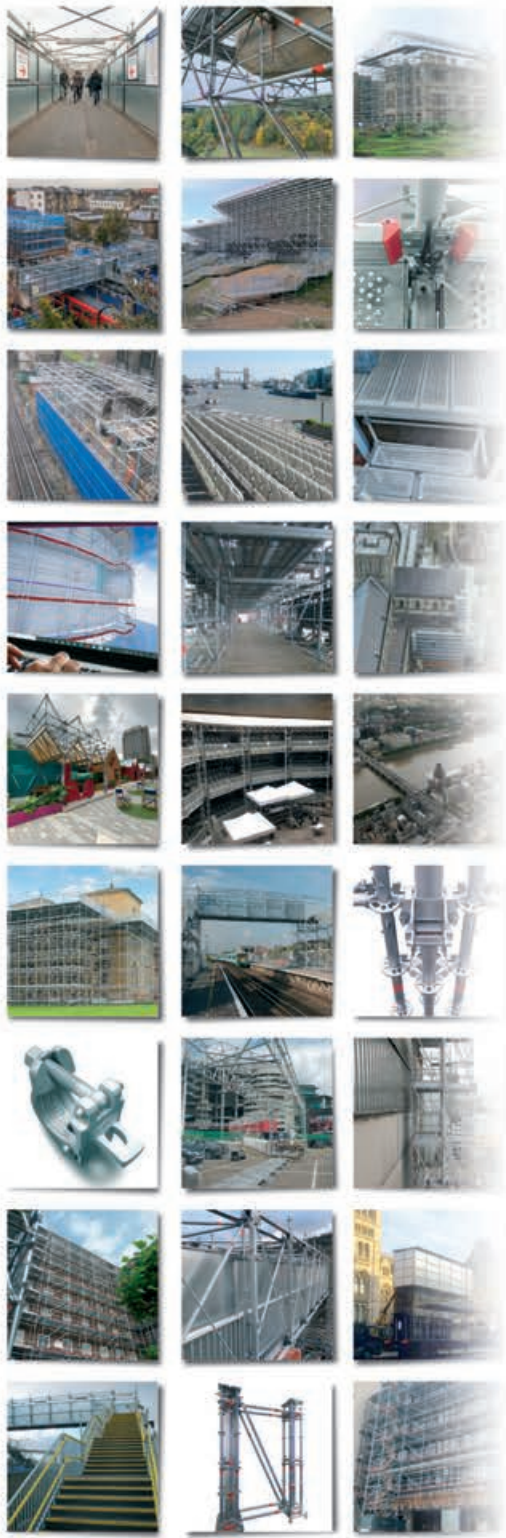
Guidance No.	Publication Date	Title
TG1	TBC	Temporary Edge Protection for Sloping and Flat Roofs – temporarily withdrawn (UR)
TG2	N/A	No longer used
TG3	19	Erection, Use and Dismantling of Temporary Rubbish Chutes on Scaffolding (UR)
TG4	19	Anchorage Systems for Scaffolding
TG5	18	Timber scaffold boards BS2482:2009
TG6	17	Care and Maintenance of Scaffold Boards
TG7	21	Scaffold Board Nailplates
TG8	21	Fire Damage
TG9	18	Guide to the Design and Construction of Temporary Roofs and Buildings (UR)
TG10	21	Flame Retardant Treatments for Timber Scaffold Boards and Battens
TG11	20	Stress Corrosion Cracking in High Tensile and Alloy Steels
TG12	17	Tying Down of Scaffold Boards
TG13	16	Non-Standard Boarded Platform (UR)
TG14	20	Supplementary Couplers and Check Couplers
TG15	N/A	No longer used
TG16	21	Anchoring to the Ground
TG17	15	Identification of BS EN74 Scaffold Fittings (UR)
TG18	N/A	No longer used
TG19	N/A	No longer used
TG20	21	Guide to Good Practice for Tube and Fitting Scaffolding
TG21	20	A Guide to Commissioning Scaffold Design
TG22	TBC	Design of Part Boarded and Other Scaffolds (Not Referred to Elsewhere)
TG23	TBC	Lacing and Bracing of Beams
TG24	20	Scaffold Products not Covered by Standards
TG25	21	Scaffold Tube Storage Racks
TG26	22	Galvanic Corrosion of Aluminium Tubes and Prefabricated Beams



**The *past, present*
and *future* of
system scaffolding**

info@layher.co.uk | www.layher.co.uk





For more than
75 years,
Layher has focused
on **innovation**
not imitation.

It's why we remain
the past, present
and future of
system scaffolding.



Layher® 

More Possibilities. The Scaffolding System.



NASC Membership

Scaffolding contractors who are full NASC members by region



London & South East

Access Solutions Scaffolding Ltd
Crayford DA1 3QU
www.access-solutions-scaffolding.co.uk

Alltask Ltd
Rochester ME2 4EJ
www.alltask.co.uk

Amber Scaffolding Ltd
Partridge Green RH13 8RA
www.amberscaffolding.co.uk

Apex Scaffolding Anglia Ltd
Lowestoft NR32 2HF
www.apexscaffolding.co.uk

Artel Scaffolding Ltd
London N20 9AB
www.artelscaffolding.com

Ash Scaffolding Ltd
Ashford TN27 8QL
www.ashscaffoldingltd.co.uk

Austins Cradles (Eastbourne) Ltd
Eastbourne BN23 6PW
www.austinscradles.co.uk

Barnet Scaffolding Services Ltd T/A JDC Scaffolding
Barnet EN5 5RD
www.jdc-scaffolding.co.uk

Benchmark Scaffolding Ltd
London W7 2QD
www.benchmarkscfolding.com

Brogan Group Ltd
Welwyn Garden City AL7 1TW
www.brogangroup.com

Browne's Scaffolding Ltd
Ashford TN26 3ND
www.brownesscaffoldingltd.com

Cade Roofing & Building Services Ltd
Portsmouth PO3 5FN
www.cade-group.co.uk

CCS Scaffolding Ltd
Gravesend DA11 9BA
www.ccsscaffolding.com

Connect Scaffolding Ltd
Bishop's Stortford CM23 1JH
www.connectscaffolding.co.uk

Coventry Scaffolding Co (London) Ltd
London SE26 5BT
www.coventryscaffolding.co.uk

D & R Group PLC
London SE15 2PR
www.drscfaff.co.uk

DTE Scaffolding & Safety Netting Ltd
Colchester CO7 7QR
www.dtscfaffoldingand-safetynetting.co.uk

E A Scaffolding & Systems Ltd
Luton LU4 9DT
www.eascaffolding.co.uk

Elite Scaffolding (Southern) Ltd
Southampton SO30 2EY
www.elite-scaffolding.co.uk

ENJ Scaffolding Ltd
Rainham RM13 8UP
www.enjscaffolding.co.uk

Esher Scaffolding Group Ltd
Esher KT10 8BJ
www.esherscaffolding.com

Fast Fix Scaffolding Ltd
Horley RH6 0HN
www.fastfixscaffolding.com

First Safety Construction Ltd
Aldermaston RG7 4NT
www.fscaffolding.co.uk

Fourways Plant Ltd
London N18 2PG
www.fourways-scaffolding.co.uk

GKR Scaffolding Ltd
London SE1 2UN
www.gkrscfaffolding.co.uk

Globe Scaffolding Ltd
Croydon CR0 3RL
www.globescfaffolding.co.uk

H & H Contract Scaffolding Ltd
Steventon OX13 6AP
www.handhcs.co.uk

Hi-Pro Scaffolding Ltd
Sandy SG19 1SD
www.hiproscaffolding.com

Ideal Scaffolding (Southern) Ltd
Camberley GU16 6HY
www.ideal-scaffolding.com

K Scaffolding Ltd
Bicester OX27 7HT
www.kscaffoldingltd.co.uk

Landmark Scaffolding Ltd
Bury St Edmunds IP30 9RS
www.landmarkscaffolding.co.uk

Liddiard Scaffolding Ltd
Sheet nr, Petersfield GU31 5PE
www.liddscfaff.com

LTC Scaffolding Limited
Uxbridge UB9 6JL
www.ltcscaffolding.co.uk

Lysander Scaffolding Ltd
Sandy SG19 2JW
www.lysanderscaffolding.co.uk

M.R. Scaffolding (Anglia) Ltd
Norwich NR13 4DS
www.mrscaffolding.co.uk

MACT Scaffolding (London) Ltd
London CR2 0EA
www.mact.co.uk

Maidstone Scaffolding Ltd
Tonbridge TN12 9RR
www.maidstone-scaffolding.co.uk

Millcroft Services PLC
Greenwich SE10 0AT
www.millcroft.co.uk

MPT Scaffolding Ltd
Stanbridge LU7 9HW
www.mptscfaffoldingltd.co.uk

MR Scaffolding Services Ltd
London CR0 3AA
www.mrscaffolding.com

Narford Scaffolding Ltd
Swaffham PE37 7QB
www.narfordscfaffolding.co.uk

NJS Scaffolding Ltd
Chichester PO19 8NY
www.scaffoldingwest-sussex.co.uk

Oxford Spires Scaffolding Ltd
Near Wantage OX12 8PT
www.oxfordspires.co.uk

P & G Scaffolding Ltd
Aylesham CT3 3EP
www.pandgscfaffolding.co.uk

PHD Modular Access Services Ltd
Uxbridge UB9 4DN
www.phdaccess.com

Pro Access Scaffolding Ltd
Leighton Buzzard LU7 9HR
www.proaccess-scaffolding.com

QFS Scaffolding Limited
Gravesend DA12 2PL
www.qfscfaffolding.com

R.E.D. Scaffolding Ltd
Kent DA2 6AA
www.redscaffoldinglimited.co.uk

Rainham Industrial Services Ltd
Middlesborough TS2 1RT
www.rainhamis.co.uk

Rodells Ltd
St Albans AL1 5AS
www.rodell-ltd.com

RPF Scaffolding Ltd
North Weald CM16 6EG
www.rpfscaffolding.co.uk

SBS Scaffolding (Power) Limited
Limited Mildenhall IP28 7DA
www.sbscaffolding.com

Skill Scaffolding Limited
Southampton SO16 0YZ
www.skillscaffolding.co.uk

Stanford Scaffolding Ltd
Romford RM3 8QE
www.stanfordscaffolding.co.uk

Tone Scaffolding Services Ltd
Croydon CR0 4TD
www.tonescaffolding.co.uk

Trad Scaffolding Co. Limited
Bromley BR1 1LR
www.trad.co.uk

Tubes Scaffolding Ltd
Bungay NR35 2AF
www.tubesscaffolding.co.uk

Unique Scaffolding Ltd
Lower Sydenham SE26 5AU
www.uniquescaffolding.co.uk

Midlands

A&A Scaffolding Plus Eight (2003) Ltd
Stoke-on-Trent ST4 7AX
www.aandascaffolding.co.uk

Access 2 Limited T/A Sandwell Scaffold
Northampton NN4 7HS
www.sandwellscaffold.co.uk

Airwright (Midlands) Ltd
Redditch B98 7SN
www.airwrightmidland.co.uk

Airwright (Midlands) Ltd
Redditch B98 7SN
www.airwrightmidland.co.uk

Apex Scaffolding (Leicester) Ltd
Blaby LE8 4GZ
www.apexscaffoldingleicester.co.uk

Ashdurn Ltd
Birmingham B25 8HQ
www.ashdurnscaffolding.co.uk

Brand Energy & Infrastructure Services UK Ltd T/A
Lyndon SGB Birmingham B33 0TD
www.lyndon-sgb.co.uk

C.S. Scaffold Contracts Limited
Retford DN22 0EQ
www.csscaffoldcontracts.co.uk

Carrington Scaffolding Ltd
Stoke on Trent ST6 8ED
www.carringtonscaffolding.co.uk

Central Scaffolding (Burton) Ltd
Burton on Trent DE13 9HS
www.centralscaffolding.com

Controlled Scaffolding Ltd
Birmingham B6 4JB
www.controlledscaffolding.co.uk

D Ward Scaffolding Co Ltd
Birmingham B19 2XN
www.wardscaffolding.com

Empire Scaffolding (GB) Ltd
Nottingham NG15 7SZ
www.empirescaffolding.co.uk

Euro Scaffolding Services Ltd
Northampton NN5 7QP
www.euroscaffolding.co.uk

Independent Scaffolding Services Ltd
West Bromwich B70 9BP
www.indscaff.co.uk

Inspired Scaffolding Services Ltd
NG22 8UG
www.iss-scaffolding.co.uk

JFE Attridge Scaffolding Services Co Ltd
Rugeley WS15 1RD
www.attridge-scaffolding.co.uk

Lindway Scaffolding Ltd
Clay Cross S45 9NU
www.lindwayscaffolding.co.uk

Malvern Scaffolding Ltd
Malvern WR14 1UU
www.malvernscaffolding.co.uk

MG Scaffolding (Oxford) Ltd
Birmingham, DY5 2JQ
www.mgscaffolding.uk.com

Midland & General Scaffolding Ltd
Rugeley, WS5 2HS
www.midlandandgeneral.com

Midland Scaffolding Services Ltd
Wellingborough NN8 2QY
www.midlandscaffolding.co.uk

Omega Scaffolding Solutions Ltd
Bilston WV14 7JY
www.omegascaffoldingolutionsltd.co.uk

Rilmac Scaffolding Ltd
Lincoln LN3 4NJ
www.rilmac.co.uk

Safe Access Scaffolding (Midlands) Ltd
Ilkeston DE7 8DU

Safe Scaffolding Midlands Ltd
Swadlincote DE11 8DE
www.safescaffolding.co.uk

Safeway Scaffolding Limited
Birmingham B46 1JB
www.safewayscaffolding.co.uk

Scaffold Erection Services Ltd
Birmingham B24 8NB
www.scaffolder.co.uk

Scaffold Services Ltd
Leicester LE5 4NN
www.scaffoldservicesltd.co.uk

Sky Scaffolding (Midlands) Ltd
Budbrooke Road CV34 5XH
www.skyscaffolding.co.uk

South Lincolnshire Scaffolding Ltd
Boston PE21 7PA
www.slslimited.com

Staffordshire Access Scaffolding Ltd
Stoke-on Trent ST4 3JP
www.staffordshire-access-scaffolding.co.uk

Star Scaffolding Ltd
West Bromwich B70 0TU
www.star-scaffolding.co.uk

SW Scaffolding Ltd
Northampton NN6 9DS
www.sw-scaffolding.co.uk

Tamworth Scaffolding Company Ltd
Tamworth B77 4QU
www.tamscaff.co.uk

UK Access Solutions Ltd
Wednesbury WS10 0NT
www.ukaccessolutions.co.uk

Viking Scaffolding Services Ltd
Dudley DY3 2PX
www.vikingscaffold.co.uk

XL Scaffolding Ltd
Peterborough PE7 2HD
www.xlscaffolding.co.uk

Northern & North Wales

3 D Scaffolding Ltd
Manchester M44 5BL
www.3dscaffolding.co.uk

Abbi Access Services Ltd
Deeside CH5 2QZ
www.abbiaccess.com
Ace Scaffolding (M/CR) Ltd
Eccles M30 8BT
www.acescaffoldingltd.co.uk

Actavo (UK) Limited
Wakefield WF4 3QZ
www.actavo.com/industrial

Advance Scaffolding (Lancashire) Ltd
Bolton BL6 5SG
www.advancescaff.co.uk

Allied Scaffolding Ltd
Oldham OL4 1JA
www.alliedaccess.co.uk

Anglesey Scaffolding (Ynys Mon) Company Ltd
Amlwch LL68 9BQ
www.angleseyscaffolding.co.uk

APE Scaffolding Ltd
Heywood OL10 1PN
www.apescaffolding.co.uk

Apply Scaffolding Services Ltd
Barnsley S74 9DY

Arctic Scaffolding Co Ltd
Flintshire CH7 3AP
www.arcticscaffolding.co.uk

B & A Scaffolding Ltd
Hull HU8 7BF
www.bandascaffolding.co.uk

Bate Scaffolding Services Ltd
Wigan WN4 8BX
www.batescaffolding.co.uk

Bee Jay Scaffolding Ltd
Leeds LS13 1BQ
www.beejayscaffolding.ltd.uk

Bilfinger UK Limited
Warrington WA3 6UT
www.is-uk.bilfinger.com

BSL (Systems) Ltd
Wirrel CH43 3DZ
www.bslsystemsLtd.co.uk

Burflex (Scaffolding) Ltd
Hull HU8 8HA
www.burflex.co.uk

Carlisle Scaffolding Ltd
Carlisle CA6 4SN
www.carlisescaffolding.co.uk



TONE[®]

SCAFFOLDING
SERVICES

ALWAYS **THINKING** ||| ALWAYS **SAFE**



reducing
our carbon
footprint
through
technology

Call now: **020 3781 7771**

TONE Scaffolding Services HQ Green Lane Sawmills, Green Lane, Outwood, Redhill, Surrey RH1 5QP
Email: solutions@tonescaffolding.co.uk www.tonescaffolding.co.uk





Castle Scaffold (Northern) Ltd
North Shields NE29 8RD
www.castlescaffold.co.uk

CDM Scaffolding Services (1994)

Ltd Warrington WA1 4AW
www.cdmscaffolding.co.uk

Cheshire Scaffolds Ltd
Stockport SK4 1NU
www.cheshirescaffoldsLtd.co.uk

Climax Scaffolding Ltd
Liverpool L14 3NA
www.climaxscaffold.com

Commercial Scaffolding Ltd
Hull HU7 0DF
www.commscaf.co.uk

Complete Access (Scaffolding) Ltd
Wakefield WF4 3HT
www.cascaffolding.co.uk

Complete Access Specialist Contracts Ltd
Barnsley S71 1HT
www.complete.gb.net

Connolly Scaffolding Ltd
Eccles M30 9QG
www.connollyscaffolding.co.uk

Contract Scaffolding Services Ltd
Carlisle CA1 3DS
www.contractscaffolding.co.uk

Crest Scaffolding Ltd
Manchester M44 5AD
www.crestscaffoldingLtd.com

Crossway Scaffolding (Elland) Ltd
Halifax HX5 9JU
www.crosswayscaffolding.co.uk

Crown Scaffolding (UK) Ltd
New Mills SK22 3JT
www.crownscaffolding.com

CWR Scaffolds Ltd
Burnley BB11 4AF
www.cwrscaffolds.co.uk

D. Stewart Scaffolding Ltd
West Auckland DL14 9PD
www.dstewartcaffoldingLtd.com

Deva Scaffolding Ltd
Deeside CH5 3PZ
www.devascaffolding.co.uk

Gibby Scaffolding Limited
Hull HU9 1JR

H.T. Scaffolding Systems Ltd
Leeds LS11 9UP
www.htscaffolding.co.uk

High Peak Scaffolding Ltd
Buxton SK17 7JB
www.highpeakscaffolding.co.uk

IBN Scaffold Access Ltd
Barugh Green, Barnsley S75 1HT
www.ibnscaffold.co.uk

Infiniti Scaffolding Ltd
Scarborough YO11 3BT
www.infinitiscaffolding.co.uk

Ingleford Scaffolding Ltd
Washington NE38 8QU
www.inglefordscaffolding.co.uk

Interlink Scaffolding Ltd
Birtley DH3 1DQ
www.islscaffolding.co.uk

J Mac Scaffolding Ltd
Stockton-on-Tees TS18 2PH
www.jmacscaffolding.co.uk

K2 Scaffolds Ltd
Stalybridge SK15 3LW
www.k2scaffolds.co.uk

KAEFER Ltd
Mansfield NG19 8BE
www.kaeferLtd.co.uk

KAEFER Ltd
Gateshead NE11 9EZ
www.kaeferLtd.co.uk

Kirk Scaffolding Ltd
Blackburn BB1 3EU
www.kirkscaffolding.co.uk

Lea Scaffolding & Access Ltd
Bolton, BL2 2AB
www.leascaffolding.co.uk

Lenehan Scaffolding (Preston) Ltd
Preston PR2 5NQ
www.lenehanscaffolding.co.uk

Manor Scaffolding Limited
Buxton SK17 9JL
www.manorscaffolding.co.uk

MTL Scaffolding Ltd
Gateshead NE8 3AE
www.mtlscaffolding.com

Network Scaffolding Contractors Ltd
Middlesbrough TS2 1UT
www.networkscaffolding.co.uk

Northern 90 Scaffolding Ltd
Oldham OL9 9EZ
www.northern90.co.uk

P James Construction Ltd
Newcastle upon Tyne NE12 9UP
www.pjames.co.uk

Paton Bros. Scaffolding Ltd
Workington CA14 4JP
www.patonbros.co.uk

PDL Scaffolding Ltd
Widnes WA8 0RH
www.pdlscaffolding.co.uk

Pickering Scaffolding Limited
Barrow-in-Furness LA14 2BB
www.pickeringscaffolding.co.uk

PJC Scaffolding Solutions Ltd
Oldham OL9 9EY
www.pjcscaffolding.co.uk

Premier Scaffolding Services Ltd
Hebburn NE31 1SP
www.premierscaffoldinghebburn.co.uk

QED Scaffolding Ltd
St Helens WA9 1HS
www.qedscaffolding.com

Ray Seager Scaffolding Services Ltd
Mochdre LL28 5BS
www.rayseager.co.uk

RJS Scaffolding Ltd
Caernarfon LL54 6DB
www.rjsscaffolding.co.uk

Rose System Scaffolding Limited
Oldham OL4 1HR
www.rosessl.co.uk

Rowland Scaffold Co Ltd
Sheffield S4 7WZ
www.rowlandsscaffold.co.uk

S & P Scaffolding Ltd
Hull HU8 8HA
www.s-pscaffolding.co.uk

S.G.S. Ltd Kingston Upon Hull
HU8 8BT
www.sgsLtd-scaffolding.com

S.Y.S. (Scaffolding Contractors) Ltd
Doncaster DN4 8DE
www.syssscaffolding.com

SAY Scaffolding (Northern) Ltd
Wetherby LS23 7AT
www.sayLtd.co.uk

Scaffolding Access Solutions Ltd
Dewsbury WF12 7RD
www.scas.co.uk

Silver Star Services Ltd
Oldham OL9 9ER
www.silverstar-services.co.uk

Speedier Scaffolding Ltd
Bolton BL5 3QH
www.speedier-scaffolding.com

Standard Scaffolding Specialists Ltd
Bolton BL3 1BW
www.standardscaffolding.co.uk

Summit Marine Scaffolding Ltd
Liverpool L31 8BX
www.summitmarine-scaffolding.co.uk

Swale Scaffolding Ltd
Richmond DL10 7JQ
www.swalegroup.com

Taziker Industrial Limited T/A Taziker Industrial Services
Heywood OL10 2SX
www.taziker.com

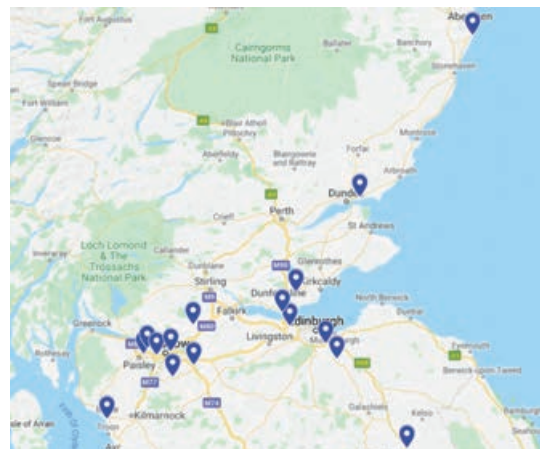
Tilson Scaffolding Ltd
Hull HU3 4XT
www.tilsonscaffolding.co.uk

Scotland & Northern Ireland Altrad Energy Support Services Ltd
Aberdeen AB12 3LF
www.muehlhan.com

Altrad Services UK
Linlithgow EH49 7SF
www.uk.altradservices.com

ASC Edinburgh Limited
Edinburgh EH17 8RZ
www.asclimited-edinburgh.co.uk

Check-It Scaffold Services Ltd
East Kilbride G74 5HG
www.checkitgroup.co.uk



City Access Scaffolding Ltd
Gorebridge EH23 4HT
www.cityaccessscaffolding.co.uk

Clyde Scaffolding Ltd
Kilsyth G65 9JX
www.clydescaffolding.co.uk

Form Access Ltd
Kirkliston EH29 9EN
www.formaccess.co.uk

Hard Rock Scaffolding Ltd
Dunfermline KY11 2XB
www.hardrocksscaffolding.com

IAS (Dundee) Ltd
Dundee DD4 8XD
www.iaslimited.co.uk

John Laidlaw & Son Limited
Jedburgh TD8 6ED
www.johnlaidlawandson.co.uk

JR Scaffold Services Ltd
Paisley PA3 4HP
www.thejrgroup.co.uk

Mar Scaffolding (Scotland) Ltd
Cowdenbeath KY4 8LP
www.marsscaffolding.co.uk

McDonald Scaffolding (Services) Ltd
Inverness IV18 0PR
www.mcdonaldscaffolding.com

MJD & Sons (Scaffolding) Ltd
Irvine, Ayrshire KA12 8NL
www.mjbandsons.co.uk

Palmer's Scaffolding UK Ltd
Glasgow G21 2QA
www.palmersgroup.co.uk

RDA Scaffolding Ltd
Bothwell G71 8BS
www.rda-scaffolding.com

TTAG Ltd
Renfrew PA4 8LF
www.ttagscaffolding.co.uk

Turner Access Ltd
Glasgow G51 3EQ
www.turner-access.co.uk

South West & South Wales A W Scaffolding (South West) Ltd
Charminster DT2 9RP
www.awscaffolding-sw.co.uk

Abbey Scaffolding (Swindon) Ltd
Swindon SN4 7DB
www.abbeysscaffold.com

Advanced Scaffolding Group Ltd
Warmley BS30 8JJ
www.advancedscaffolding.com

Allen & Foxworthy Ltd
Swindon SN25 5AZ
www.allenandfoxworthy.co.uk

Apex Scaffolding (Exeter) Ltd
Exeter EX4 8HH
www.apexscaffolding.co.uk

Ashton Scaffolding Services Ltd
Ashton BS3 2TN
www.ashtonscaffolding.com

B.J. Champion Scaffolding Limited
Basingstoke RG24 8NT
www.thechampiongroup.co.uk

Blencowe Scaffolding Ltd
Salisbury SP4 6DR
www.blencowesccaffolding.co.uk

Brunel Scaffolding Ltd
Swindon SN2 1EL
www.brunel-scaffolding.co.uk

Bryson Scaffolding Ltd
Bristol BS2 0YA
www.brysonsccaffolding.co.uk

Carl Hendy Limited T/A ASW Scaffolding
Neath SA11 4SR
www.absolute-scaffolding-wales.co.uk

Castle Scaffolding (Wales) Ltd
St Clears SA33 4BX
www.castlescaffolding-wales.co.uk

Chris Sedgeman Scaffolding Ltd
Penzance TR20 8HX
www.sedgeman.co.uk

Denholm Industrial Services Ltd
Yeovil BA22 8RN
www.denholm-industrial.com

Design Scaffolding (Bristol) Ltd
Bristol BS13 7TT
www.designsccaffolding.com

Drake Scaffolding Services Ltd
Plymouth PL6 7SG
www.drakescaffolding.co.uk

Elite Scaffolding (South West) Ltd
Yeovil BA22 8RN
www.elitescaffoldingsw.co.uk

Formula Scaffolding Ltd
Southampton SO30 3DU
www.formulascaffolding.co.uk

Fred Champion Scaffolding Ltd
Liskeard PL14 6LE
www.fcgroundworks.com

Gloucester Scaffolding Ltd
Cheltenham GL51 0SW
www.gloucesterscaffolding.co.uk

HM Scaffolding Ltd
Cirencester GL7 5UH

JC Beale Scaffolding Ltd
Basingstoke RG25 2RL
www.jcbeale.co.uk

JEM Scaffolding Ltd
Plymouth PL9 7BG
www.scaffoldingplymouth.co.uk

King Scaffolding Ltd
Bristol BS5 0TS
www.kingscaffolding.co.uk

LTC Specialist Scaffolding Ltd
Plymouth PL9 8AA
www.ltspecialistscaffolding.co.uk

M & M Scaffolding (Cornwall) Ltd
St Austell PL26 7AP
www.mandmscaffolding.co.uk

Magnum Scaffolding (Contracts) Ltd
Keynsham BS31 2AL
www.magnumsccaffolding.co.uk

MG Scaffolding (Oxford) Ltd
Cheltenham GL52 6RT
www.mgscaffolding.uk.com

Montana Scaffolding Ltd
Cossington TA7 8LU
www.montanasccaffolding.co.uk

Neal Stoneman Scaffolding Ltd
Plymouth PL5 3LS
www.nssccaffolding.net

O.K. Scaffolding Limited
Mountain Ash CF45 4PH

P.S.S. Scaffolding Ltd
Bridgend CF31 3UT
www.pss-scaffolding.co.uk

Pen Mill Scaffolding (Hire & Sales) Ltd
Yeovil BA22 8HZ
www.penmillscaffolding.co.uk

Philip Steele Building Equipment Ltd
Kingsteigton TQ12 3PJ
www.psb-scaffolding.co.uk

Pro-Fix Access Ltd
Titchfield PO14 3EB
www.profixaccess.co.uk

RBS Scaffolding Ltd
Winchester SO23 7RX
www.rbsscaffolding.co.uk

Rowecord Total Access Ltd
Swansea SA6 8QF
www.rowecordtotalaccess.com

S & K Scaffolding Ltd
Eastleigh SO50 7DZ
www.sandkscaffolding.co.uk

S & K Scaffolding Ltd
Eastleigh SO50 7DZ
www.sandkscaffolding.co.uk

S.N. Scaffolds LLP
Bath BA2 3DT
www.snscaffolds.com

S.R.K. Scaffolding Limited
Wellington TA21 9FD
www.srkscaffold.co.uk

SCA Group Ltd
Wimborne BH21 6FA
www.sca-group.com

Scaffolding 4 MGB Limited
Bristol BS13 7TT
www.scaffolding4mgb.co.uk

Scaffolding Solutions (Wales) Limited
Maesteg CF34 0BQ
www.scaffoldingssolutionswales.co.uk

Severnside Scaffolding Ltd
Gloucester GL2 5HL
www.severnsidemorley.co.uk

Shield Environmental Services Limited T/A Shield Services Group
Warmley BS30 8XJ
www.shieldservicesgroup.com/services/scaffolding

Sonic Scaffolding 2000 Ltd
Winterbourne Dauntsey SP4 6HG
www.sonicsscaffolding2000.co.uk

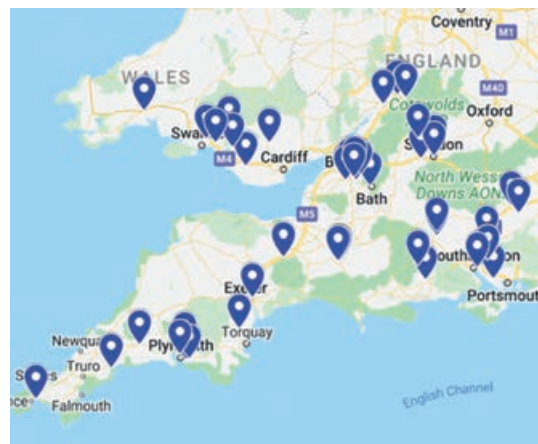
SWC Scaffolds Ltd
Bristol BS16 3JX
www.swcscaffolds.co.uk

Thomson Scaffolding Limited
Neath SA11 2NS
www.thomsonsccaffoldingltd.co.uk

TR Scaffolding (Bristol) Ltd
Bristol BS4 5NZ
www.trsccaffolding.com

Tubeline Scaffolding Ltd
Cranbourne BH21 5RL
www.tubelinescaffolding.co.uk

Vision Scaffolding Solutions Ltd
Southampton SO14 5QH
www.vision-scaffolding.co.uk





NORTHERN REGION PROJECTS

BENCHMARK SCAFFOLDING



Setting the Standards





ALWAYS THINKING ||| ALWAYS SAFE

TONE[®]
SCAFFOLDING
SERVICES

Congratulations
on your **Platinum**
Jubilee year

TONE Scaffolding Services HQ Green Lane Sawmills, Green Lane, Outwood, Redhill, Surrey RH1 5QP
Email: solutions@tonescaffolding.co.uk www.tonescaffolding.co.uk

